



Correction: Effect of nociception level-directed analgesic management on opioid usage in robot-assisted laparoscopic radical prostatectomy: a single-center, single-blinded, randomized controlled trial

Nobuhiro Tanaka¹ · Yuma Kadoya² · Takanori Suzuka¹ · Takayuki Yamanaka³ · Mitsuru Ida¹ · Yusuke Naito¹ · Naoki Ozu⁴ · Shunta Hori⁵ · Masahiko Kawaguchi¹

Published online: 22 April 2025

© The Author(s) under exclusive licence to Japanese Society of Anesthesiologists 2025

Correction: Journal of Anesthesia

<https://doi.org/10.1007/s00540-024-03365-x>

In this article, Table 1 and Fig. 3 appeared incorrectly.

In Table 1, the data in the column ‘NOL group ($n = 25$)’ and row ‘NOL < 10 (%)’ was incorrectly given as ‘69.0’ but should read as ‘78.0’. The data in the column ‘Control group ($n = 25$)’ and row ‘NOL < 10 (%)’ was incorrectly given as ‘78.0’ but should read as ‘69.0’.

The data in the column ‘NOL group ($n = 25$)’ and row ‘ $10 \leq \text{NOL} \leq 25$ (%)’ was incorrectly given as ‘25.1’ but should read as ‘18.9’. The data in the column ‘Control group ($n = 25$)’ and row ‘ $10 \leq \text{NOL} \leq 25$ (%)’ was incorrectly given as ‘18.9’ but should read as ‘25.1’.

The data in the column ‘NOL group ($n = 25$)’ and row ‘NOL > 25 (%)’ was incorrectly given as ‘5.9’ but should read as ‘3.1’. The data in the column ‘Control group ($n = 25$)’ and row ‘NOL > 25 (%)’ was incorrectly given as ‘3.1’ but should read as ‘5.9’.

Inside Fig. 3a and b, the word "remifentanyl" was incorrectly spelled, which should be "remifentanil";

In Fig. 3a, the line colors for control group was represented by a red line, but should be in blue line. Similarly, the NOL group was represented by a blue line, but should be in red line.

For completeness and transparency, the old incorrect and correct versions are displayed below. The original article has been corrected.

The original article can be found online at <https://doi.org/10.1007/s00540-024-03365-x>.

✉ Nobuhiro Tanaka
nobuhiroTanaka@naramed-u.ac.jp

¹ Department of Anesthesiology, Nara Medical University, 840 Shijo-cho, Kashihara, Nara, Japan

² Department of Anesthesiology, Ikeda City Hospital, Ikeda, Osaka, Japan

³ Department of Anesthesiology, Nara Prefecture General Medical Center, Nara, Nara, Japan

⁴ Institute for Clinical and Translational Science, Nara Medical University Hospital, Kashihara, Nara, Japan

⁵ Department of Urology, Nara Medical University, Kashihara, Nara, Japan

Incorrect version:**Table 1** Patient characteristics

	NOL group (<i>n</i> = 25)	Control group (<i>n</i> = 25)
Patient characteristics		
Age (years)	68 (6.6)	68 (5.8)
Weight (kg)	69.9 (9.7)	64.7 (8.6)
Height (cm)	169.8 (7.4)	166.5 (4.6)
BMI (kg/m ²)	24.2 (3.2)	23.3 (2.8)
ASA-PS, <i>n</i> (%)		
I	3 (12.0)	3 (12.0)
II	21 (84.0)	22 (88.0)
III	1 (4.0)	0 (0.0)
Comorbidity, <i>n</i> (%)		
Hypertension	15 (60.0)	12 (48.0)
Diabetes	4 (16.0)	4 (16.0)
Chronic kidney disease	2 (8.0)	3 (12.0)
Preoperative assessments		
WHODAS 2.0 (%)	4.3 (7.1)	5.0 (5.2)
PCS	22.6 (9.8)	20.9 (11.5)
HADS-total	10.0 (4.3)	10.3 (5.9)
HADS-A	4.8 (2.9)	4.8 (3.6)
HADS-D	5.2 (2.7)	5.5 (3.4)
Surgical data		
Procedure, <i>n</i> (%)		
Standard RARP	11 (44.0)	14 (56.0)
RS-RARP	14 (56.0)	11 (44.0)
Lymph node dissection, <i>n</i> (%)		
Yes	12 (48.0)	14 (56.0)
No	13 (52.0)	11 (44.0)
Duration of surgery (min)	261 (78)	259 (63)
Duration of anesthesia (min)	317 (79)	315 (64)
NOL data		
NOL < 10 (%)	69.0	78.0
10 ≤ NOL ≤ 25 (%)	25.1	18.9
NOL > 25 (%)	5.9	3.1

Data are presented as means (standard deviations) or counts with proportions (occupancy)

ASA-PS American Society of Anesthesiologists physical status, HADS Hospital Anxiety and Depression Scale, IL-6 interleukin-6, NOL nociception level, PCS Pain Catastrophizing Scale, RARP robot-assisted radical prostatectomy, RS-RARP

Retzius space-sparing robot-assisted radical prostatectomy, *SD* standard deviation, *WHO-DAS2.0* World Health Organization Disability Assessment Schedule 2.0

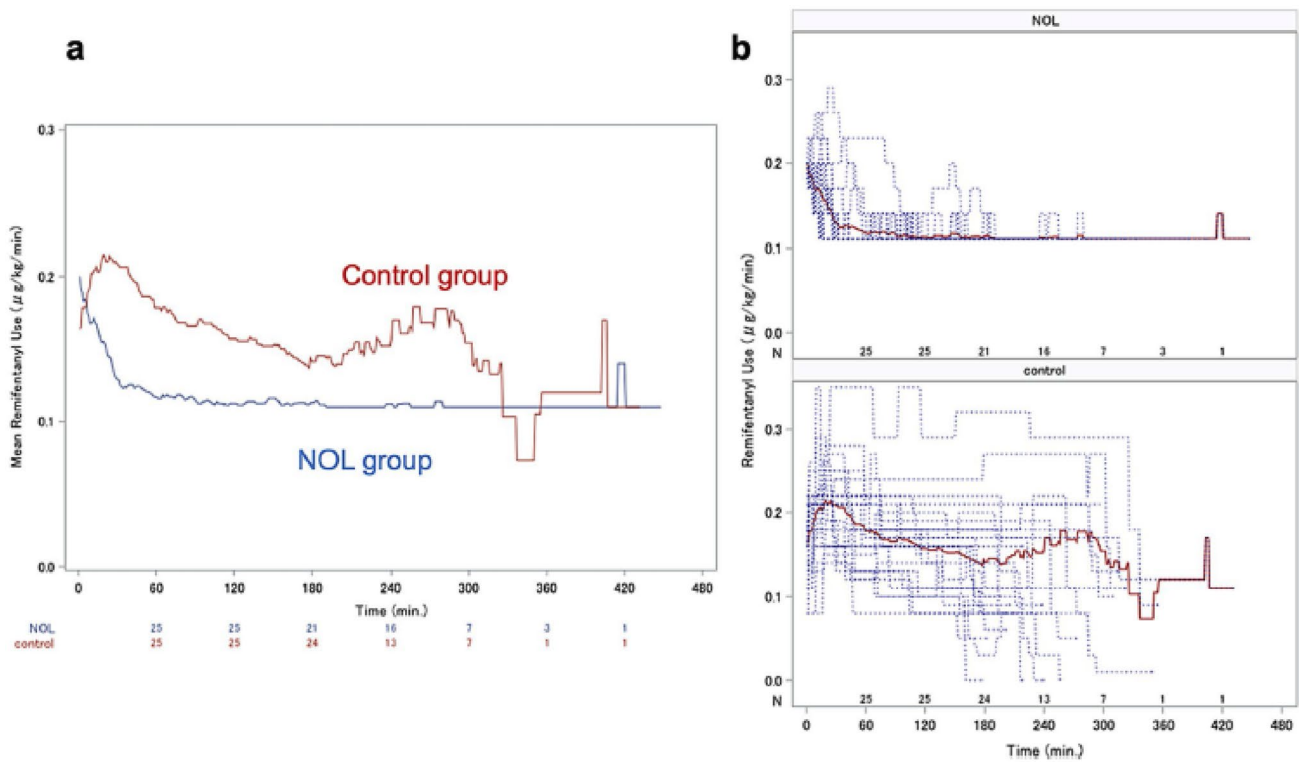


Fig. 3 Trends in remifentanyl flow rates. **A** The mean remifentanyl flow rate in the NOL and control groups. **B** Spaghetti plot graph representing the change in remifentanyl flow rate by individual patient in both groups. The vertical axis represents the mean remifentanyl flow rate and the horizontal axis represents the operation time. The blue dotted line shows the change in remifentanyl dose flow rate for each patient and the red line shows the mean. In the NOL group, a flow rate of 0.11 µg/kg/

min was reached in all the cases. The total number of remifentanyl flow rate changes (median [interquartile range]) in the NOL and control groups was 5 [3–7.5] and 5 [4–8] times, respectively. No significant differences were observed ($P=0.271$). The number of times (median [interquartile range]) the remifentanyl flow rate was increased according to increasing NOL (median [interquartile range]) was 1 [0–3] in the NOL group. *NOL* nociception level

Correct version:

Table 1 Patient characteristics

	NOL group ($n=25$)	Control group ($n=25$)
Patient characteristics		
Age (years)	68 (6.6)	68 (5.8)
Weight (kg)	69.9 (9.7)	64.7 (8.6)
Height (cm)	169.8 (7.4)	166.5 (4.6)
BMI (kg/m^2)	24.2 (3.2)	23.3 (2.8)
ASA-PS, n (%)		
I	3 (12.0)	3 (12.0)
II	21 (84.0)	22 (88.0)
III	1 (4.0)	0 (0.0)
Comorbidity, n (%)		
Hypertension	15 (60.0)	12 (48.0)
Diabetes	4 (16.0)	4 (16.0)
Chronic kidney disease	2 (8.0)	3 (12.0)
Preoperative assessments		
WHODAS 2.0 (%)	4.3 (7.1)	5.0 (5.2)
PCS	22.6 (9.8)	20.9 (11.5)
HADS-total	10.0 (4.3)	10.3 (5.9)
HADS-A	4.8 (2.9)	4.8 (3.6)
HADS-D	5.2 (2.7)	5.5 (3.4)
Surgical data		
Procedure, n (%)		
Standard RARP	11 (44.0)	14 (56.0)
RS-RARP	14 (56.0)	11 (44.0)
Lymph node dissection, n (%)		
Yes	12 (48.0)	14 (56.0)
No	13 (52.0)	11 (44.0)
Duration of surgery (min)	261 (78)	259 (63)
Duration of anesthesia (min)	317 (79)	315 (64)
NOL data		
$\text{NOL} < 10$ (%)	78.0	69.0
$10 \leq \text{NOL} \leq 25$ (%)	18.9	25.1
$\text{NOL} > 25$ (%)	3.1	5.9

Data are presented as means (standard deviations) or counts with proportions (occupancy)

ASA-PS American Society of Anesthesiologists physical status, HADS Hospital Anxiety and Depression Scale, *IL-6* interleukin-6, *NOL* nociception level, PCS Pain Catastrophizing Scale, RARP robot-assisted radical prostatectomy, RS-RARP Retzius space-sparing robot-assisted radical prostatectomy, SD standard deviation, WHO-DAS2.0 World Health Organization Disability Assessment Schedule 2.0

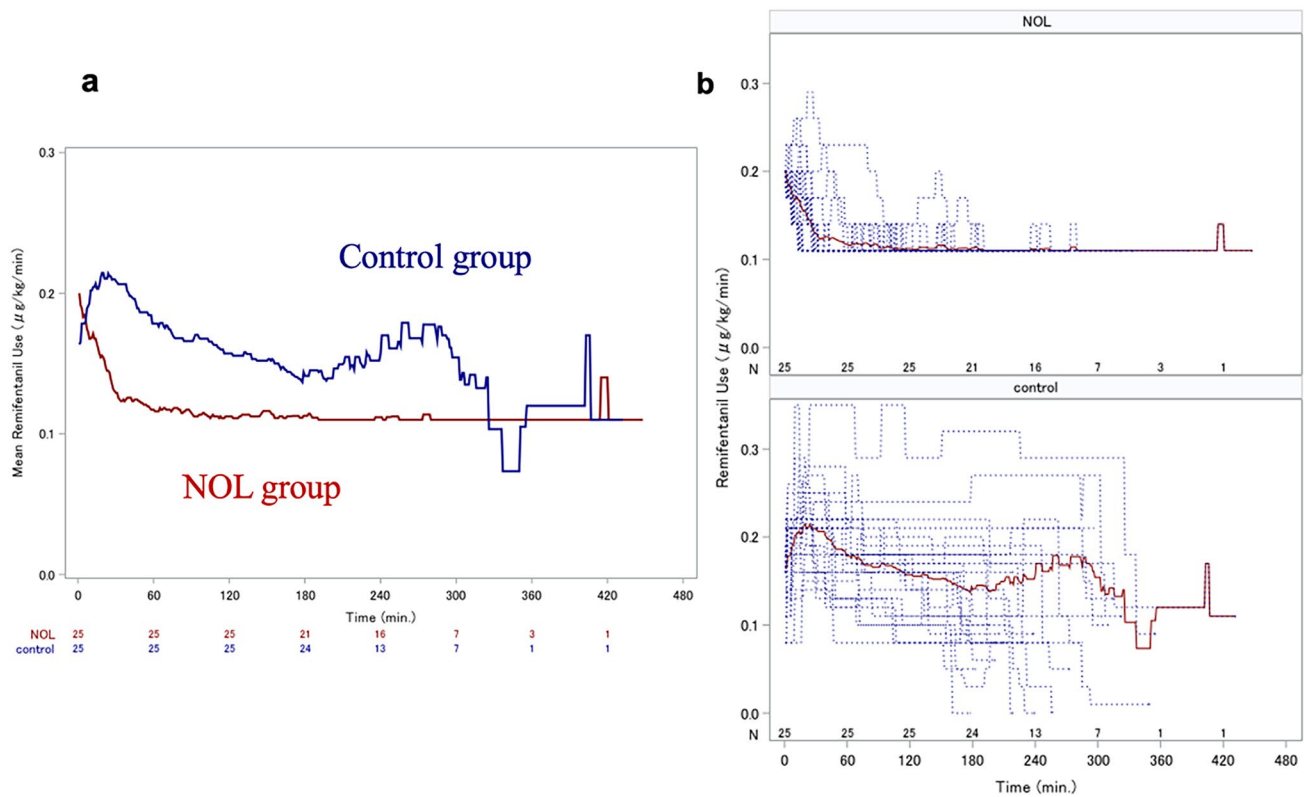


Fig. 3 Trends in remifentanyl flow rates. **A** The mean remifentanyl flow rate in the NOL and control groups. **B** Spaghetti plot graph representing the change in remifentanyl flow rate by individual patient in both groups. The vertical axis represents the mean remifentanyl flow rate and the horizontal axis represents the operation time. The blue dotted line shows the change in remifentanyl dose flow rate for each patient and the red line shows the mean. In the NOL group, a flow rate of 0.11 µg/kg/min was reached in all the cases. The total number of remifentanyl flow rate changes (median [interquartile range]) in the NOL and control groups was 5 [3–7.5] and 5 [4–8] times, respectively. No significant differences were observed ($P=0.271$). The number of times (median [interquartile range]) the remifentanyl flow rate was increased according to increasing NOL (median

[interquartile range]) was 1 [0–3] in the NOL group. *NOL* nociception level

Publisher's Note Springer Nature remains neutral with regard to jurisdictional claims in published maps and institutional affiliations.